



Capital Area Michigan Works! served
260,031 people
at its three American Job Centers.

2,675 jobs filled
with 571 businesses.

5,940 individuals
served in eight intensive programs.

CONNECTING WITH **BUSINESS**. STRENGTHENING OUR **WORKFORCE**.

INVESTING IN OUR COMMUNITY

FINANCIAL SUMMARY | TOTAL EXPENDITURES FOR YEAR ENDED JUNE 30, 2017

\$9,344,028.00

WORKFORCE INNOVATION & OPPORTUNITY ACT

ADULT	\$1,237,061.00	13.2%
YOUTH	\$1,080,448.00	11.6%
DISLOCATED WORKER	\$729,479.00	7.8%
DISLOCATED WORKER - NEG	\$220,435.00	2.4%
STATEWIDE ACTIVITIES	\$115,579.00	1.2%

PARTNERSHIP, ACCOUNTABILITY, TRAINING AND HOPE (PATH)

TANF FY17	\$2,003,421.00	21.4%
YOUTH	\$434,913.00	4.7%

OTHER EXPENDITURES

PY16 PROGRAMS

WAGNER-PEYSER EMPLOYMENT SERVICES	\$742,202.00	7.9%
H1-B TECHNICAL SKILLS TRAINING	\$290,848.00	3.1%
JOBS FOR AMERICAN GRADUATES	\$205,000.00	2.2%

FY17 PROGRAMS

SKILLED TRADES TRAINING FUNDS (STTF)	\$1,708,821.00	18.3%
FOOD ASSISTANCE EMPLOYMENT & TRAINING PROGRAM	\$111,502.00	1.2%
TRADE ADJUSTMENT ASSISTANCE (TAA)	\$84,072.00	0.9%
PRISONER REENTRY	\$298,504.00	3.2%
TAACCTT (TAA FOR COMMUNITY COLLEGE & CAREER TRAINING)	\$33,267.00	0.4%
FOSTER CARE SUMMER YOUTH-DHHS	\$48,476.00	0.5%

CAPITAL AREA MICHIGAN WORKS! PARTNERS

CAPITAL AREA MICHIGAN WORKS! ADMINISTRATIVE STAFF

Becky Powers, Chief Financial Officer
Brett Cornwell, Talent Specialist/Reemployment
Carrie Rosingana, Chief Operating Officer
Damya Lumpkin, Talent Specialist Assistant
Debbie Sight, Grant Financial Analyst
Edythe Hatter-Williams, Chief Executive Officer
Ellen Russell, Receptionist
Ezattallah Shamszai, Talent Specialist
George Thompson, Talent Specialist Assistant
Genell Dorthy, Talent Team Leader
Jay LaNew, Business Services/Apprenticeship Liaison
Jenny McCulloch, Executive Director, Capital Area IT Council
Jim Bunn, Business Services Liaison/Manufacturing
Joseph Winkiel, Business Services Liaison/Healthcare, IT
Michelle Cordano, Executive Director, Capital Area Manufacturing Council
Ray Trevino, Talent Specialist/TAA
Rosanne Allen, Executive Assistant
Tekea Norwood, Program Compliance Officer
Teri Sand, Business Services Team Leader
Tyler Wyson, Chief Information Officer

CAPITAL AREA MICHIGAN WORKS! ADMINISTRATIVE BOARD

Adam Hussain, Lansing City Council Member
Carol Koenig, Ingham County Commissioner
David Pohl, Clinton County Commissioner
Glenn Freeman III, Eaton County Commissioner
Joseph Brehler, Eaton County Commissioner
Judi Brown Clarke (Chair), Lansing City Council Member
Kara Hope, Ingham County Commissioner
Kathie Dunbar, Lansing City Council Member
Mark Meadows, East Lansing Mayor
Renee Freeman, Office of the Mayor of Lansing
Robert Showers, Clinton County Commissioner
Sarah Anthony, Ingham County Commissioner

PARTNERS

AARP Foundation
AmeriCorps
Capital Area Information Technology Council
Capital Area Manufacturing Council
Capital Area Michigan Works! Administration Offices
Career Quest Learning Centers, Inc.
Clinton Task Force on Employment, Inc.
Disability Appeals Advocates, L.L.C.
International Trucking School
JobCorps
Lansing Community College
Lansing School District
Michigan Rehabilitation Services DHHS
New Horizons Computer Learning Center
Peckham, Inc.
Pottersville School District
TIA Veterans Services Division

CAPITAL AREA MICHIGAN WORKS! WORKFORCE DEVELOPMENT BOARD

Andy Kotarba, Dewpoint
Chris Holman, Michigan Business Network
Darcy Kerr, AF Group
David Hollister, Hollister Solutions
Dean Poggiali, Capital Area United Way
Edith Suttles, Diversified Environmental Services, Inc.
Glenn Freeman III, Greater Lansing Labor Council
Jane Doty (Chair), H & H Restaurants
*Janet Lillie, Michigan State University
Jim Dravenstatt-Moceri, IBEW Local 352/Greater Lansing Labor Council
Joseph Brehler, Law Offices
*Karen Kafantaris, AARP Michigan
Mark Burnham, Michigan State University
Mike King, WILX TV-10
Paula Cunningham, AARP Michigan
Rey Guzman, Talent Investment Agency
Robert Proctor, Lansing Community College
Robert Trezise, Lansing Economic Area Partnership (LEAP)
Rosanne Renauer, Michigan Rehabilitation Services
DHHS

Sandra Pearson, Habitat for Humanity of Michigan
*Scott Sowulewski, AF Group
Sergio Keck, Lansing School District
Shawn Davis, General Motors
*Shelly Neal, Michigan Rehabilitation Services DHHS
Sherry Pfaff-Doody, Sparrow Health System
Shirley Hyde, Eyde Company
Su A'lyn Holbrook, Ingham County Department of Health & Human Services
Thomas Ruis, Fifth Third Bank
William Brewer II, Global Business Resource Group
William Kimble, C2AE
*Alternate

TEACH. TALENT. THRIVE. (T3) ADVISORY COUNCIL

Amy Busch, Bekum America Corporation
Arnold Weinfeld, MSU Outreach & Engagement
Brent Knight, Lansing Community College
Chris Holman, Michigan Business Network (Chair)
Cindy Anderson, Eaton Regional Education Service Agency (RESA)
*Delsa Chapman, Lansing School District
Dennis Theis, Maner Costerisan
Edith Suttles, Diversified Environmental Services
Edythe Hatter-Williams, Capital Area Michigan Works!
Gary Reid, WKAR
Gene Shanahan, WLNS
Hiram Fitzgerald, MSU Outreach & Engagement
Jack Davis, Loomis Law
Jane Doty, H & H Restaurants
Jason Vanderstelt, Adams Outdoor Advertising
Jim Dravenstatt-Moceri, IBEW Local 352/Greater Lansing Labor Council
Karen Steff, Render Studios
Kate Snyder, Piper & Gold Public Relations

Kirk Riley, Information Technology Empowerment Center (ITEC)
Kristin Beltzer, Lansing Regional Chamber of Commerce
Lawrence Hidalgo, Jr., Lansing Community College
Mark Cascarella, Lansing School District
Michael Vitale, Comcast Spotlight
Mike King, WILX TV-10
*Pat Jackson, Clinton County RESA
Patrick Harrison, Dean Transportation
Paul Elam, Public Policy Associates
Robert Trezise, Lansing Economic Area Partnership (LEAP)
Rosanne Renauer, Michigan Rehabilitation Services
Sagar Sheth, Moebius Technologies
Scott Duimstra, Capital Area District Library
Scott Koenigsnecht, Ingham Intermediate School District
Stan Kogut, Consultant
Sue Pigg, Tri-County Regional Planning Commission
Teresa Kmetz, Capital Area United Way
Wayne Petroelje, Clinton County RESA
*Alternate

TEACH. TALENT. THRIVE. (T3) BUSINESS COUNCIL

April Clobes, MSU Federal Credit Union
Chris Holman, Michigan Business Network (Chair)
Daryl Adams, Spartan Motors
Edith Suttles, Diversified Environmental Services
Edythe Hatter-Williams, Capital Area Michigan Works!
Jeff Wesley, Two Men and a Truck
Jeffrey Benson, Case Credit Union
Jim Robinson, Farm Bureau Insurance
Kellie Dean, Dean Transportation
Lisa Corless, AF Group
Mark Alley, Emergent BioSolutions
Matt Hedberg, Right at Home
Matt Rush, Hayes Green Beach Memorial Hospital
Michael Flowers, Lansing Board of Water & Light
Mike King, WILX
Mitchell Tomlinson, Peckham, Inc.
Robert Trezise, Lansing Economic Area Partnership (LEAP)
Sagar Sheth, Moebius Technologies
Sherry Pfaff-Doody, Sparrow Health System
Terry Grimm, Niowave
Tim Daman, Lansing Regional Chamber of Commerce
Tom Mee, McLaren Greater Lansing
Troy Bancroft, AgroLiquid

Through its strong network of community partners, Capital Area Michigan Works! is able to serve job seekers and businesses in Ingham, Eaton and Clinton Counties.

CONNECTING WITH OUR BUSINESS PARTNERS

TRAINING, DEVELOPING AND RETAINING TALENT

The Skilled Trades Training Fund, managed by the Capital Area Michigan Works! Business Services Team, provides employers tools to improve employees' skills through classroom training, on-site training with wage reimbursement and apprenticeships.



54 Mid-Michigan businesses were awarded **\$2,308,421.**
4,040 trained, 150 of them were apprentices.
The average wage for trainees is \$21.11 per hour.

WHAT IS THE BUSINESS SERVICES TEAM?

The BST partners with businesses in Greater Lansing to customize and implement recruitment strategies, ensuring organizations have the talent needed to prosper and grow.

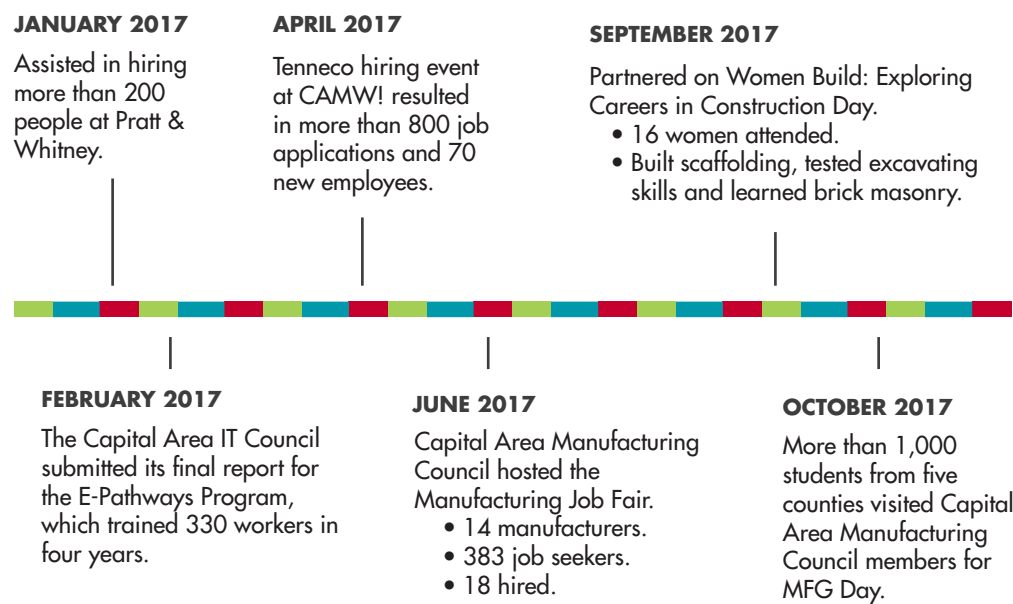


THE BST FILLED 2,675 JOBS WITH 571 BUSINESSES IN 2017.

CONNECTING BUSINESS AND EDUCATION THROUGH TEACH. TALENT. THRIVE.

59 business and education leaders in Greater Lansing have banded together to support education and talent development in STEAM – Science, Technology, Engineering, Arts and Math – for students in Mid-Michigan.

2017 ACHIEVEMENTS WITH OUR BUSINESS PARTNERS



HELPING CAREER SEEKERS ACHIEVE THEIR GOALS

PROVIDING OPPORTUNITY

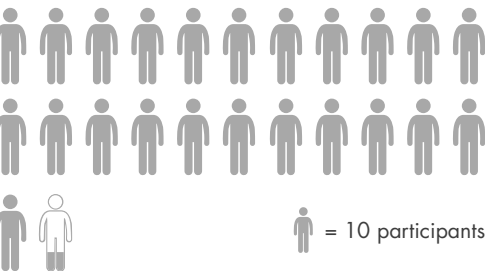
Workforce Innovation & Opportunity Act (WIOA) Adult and Dislocated Worker

The WIOA Adult and Dislocated Worker Programs aid job seekers through training and work with employers. Job seekers may be enrolled in WIOA for multiple years.

310 WIOA Adult participants (18 years of age+) Average hourly wage: \$16



231 WIOA Dislocated Worker (DW) participants Average hourly wage: \$15.27



BARRIERS TO EMPLOYMENT MAY INCLUDE:

- Below 8th grade English reading, writing or computing level.
- Low-income.
- Homeless.
- Formerly in foster care.

21 on-the-job trainings completed.

"I am very excited to start my career as a Registered Nurse, and I am very thankful for Capital Area Michigan Works!' help!"
-Brittly McBride

Brittly received WIOA Adult assistance to fund her last semester at Lansing Community College and now makes \$35 per hour.

REMOVING BARRIERS

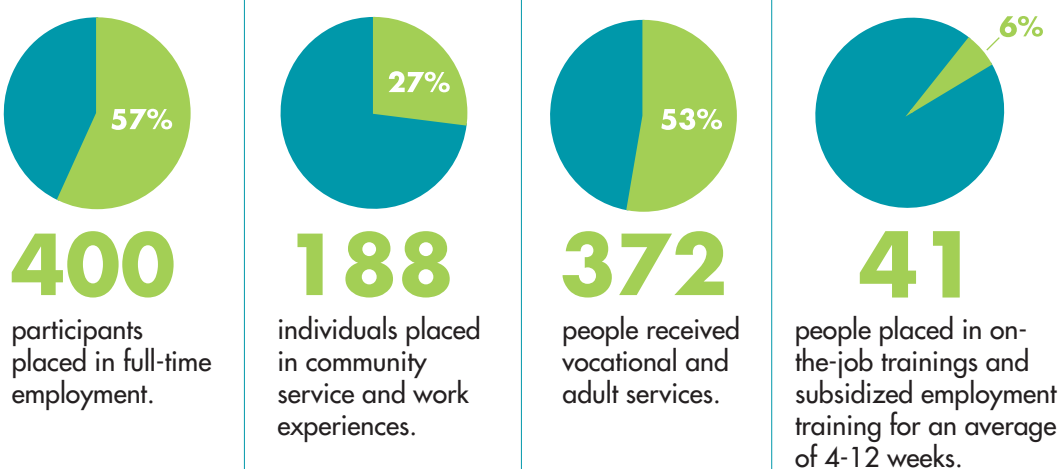
PATH: Partnership. Accountability. Training. Hope.

From transportation and child care to English as a second language, PATH provides robust assistance and support to help families become self-sufficient.



703 PEOPLE ENROLLED IN THE PATH PROGRAM IN 2017.

Many will continue in the program for 2018. Average hourly wage: \$10



"My first interview, my first job, is a result of the dedicated team at Capital Area Michigan Works!. My success proves the dedicated support and commitment CAMW!'s strong team shows their clients."
-Inayatullah Niaziwho

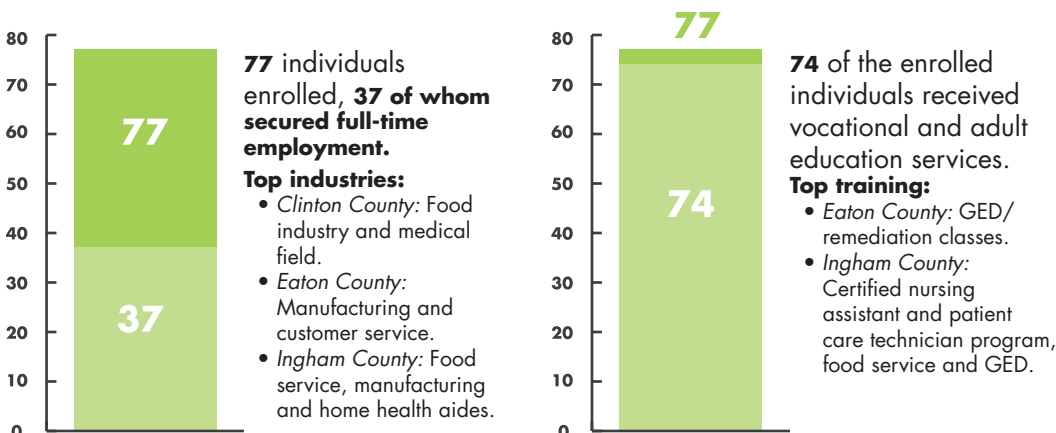
Inayatullah received PATH assistance and now works in the health care industry, making \$15 per hour.

ESTABLISHING INDEPENDENCE

Food Assistance Employment and Training Program

The Food Assistance Employment and Training Program helps participants obtain and maintain employment and establish financial independence with the help of career coaches.

FOOD ASSISTANCE EMPLOYMENT AND TRAINING PROGRAM ENROLLMENT



PROVIDING ONE STOP FOR JOB SEARCH

Wagner-Peyser Employment Service Program

The Wagner-Peyser Employment Service Program helps career seekers advance their skills through workshops and working one-on-one with career coaches to improve interview materials, such as their resume and interview skills.



260,031 individuals visited our three American Job Centers in 2017.

124 individuals served through Reemployment Services and Eligibility Assessment (RESA), which provides customized services to individuals who've exhausted their Unemployment Insurance Agency benefits, helping them return to work faster.

PREPARING THE NEXT GENERATION

FOSTERING YOUNG TALENT

Jobs for Michigan's Graduates (JMG)

JMG helped **112 students** in the region overcome their barriers to graduation while exploring careers and postsecondary education.



45 STUDENTS participated in four talent tours to discover careers in:



JMG received the 5-of-5 Award from the national Jobs for America's Graduates office for exceeding national standards in measuring student success.

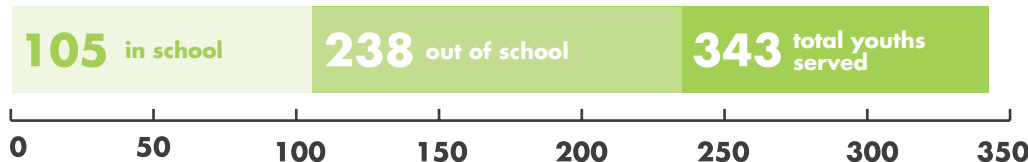
5-OF-5 AWARD STANDARDS:

- Total graduates.
- Total positive outcomes.
- Total in full-time placement.
- Total in full-time jobs.
- Total civilian job placements and military service.

TRAINING FOR THE FUTURE

Workforce Innovation & Opportunity Act (WIOA) Youth

Through the WIOA Youth Program, teens and young adults ages 14-24, receive education and training opportunities for in-demand occupations. Average hourly wages ranged from \$9.73 to \$17.



51 teens and young adults received industry recognized credentials, education or training, such as a GED or a certified nursing assistant (CNA) credential, through the WIOA Youth Program. Youth can be enrolled for multiple years.



A proud partner of the American Job Center network